



Spurrell Avenue, Bexley



Harpers & Co

Spurrell Avenue

Bexley

LARGE FRONT DRIVE | GAS CENTRAL HEATING THROUGHOUT
| DOUBLE GLAZING THROUGHOUT | MASTER BED WITH EN-SUITE
| MASTER BED WITH DRESSING ROOM | 4 DOUBLE BEDROOMS
| UTILITY ROOM | LARGE OPEN PLAN LOUNGE & DINER
| GARAGE | INTEGRATED STORAGE THROUGHOUT

Spacious & extended, immaculate family home on an attractive corner plot, in a quiet residential road in the highly sought after Joydens Wood area.

Property features include a garage, 3 reception rooms, master bed with EN-SUITE & WALK-IN WARDROBE, large front drive & a sizeable FAMILY GARDEN.

Harpers & Co is delighted to offer this spacious, extended 4 bedroom property which is very well decorated with a neutral colour palette throughout. This property is situated in the favoured 'Spurrell Avenue' in close proximity to the area's leading Secondary & Primary Schools.

This family home has been lovingly decorated & is a credit to the current owners. The property boasts 2 large reception rooms, a study, dining room, 4 double bedrooms, master bed with en-suite, family bathroom & large kitchen.

Entrance Hallway 11' 6" x 5' 11" (3.5m x 1.8m)

Hardwood front door with tri-lock system, oak effect flooring throughout, 1 x radiator, pendant light to ceiling, smoke alarm, thermostat.

Reception Room 12' 2" x 15' 9" (3.7m x 4.8m)

Oak flooring throughout, skirting, coving, 1 x radiator, aerial point & multiple plug points, UPVC window, curtain rail.

Reception Room 2 12' 2" x 23' 11" (3.7m x 7.3m)

Fully carpeted throughout, skirting, coving, gas fireplace, limestone mantle & hearth, pendant light, multiple plug points, TV aerial point, wall scone, ceiling scone, 2 x radiators, UPVC windows to front elevation, curtain rail.

Dining Room 13' 1" x 14' 9" (4.0m x 4.5m)



Parquet flooring throughout, skirting, coving, radiator with ornate cover, pendant light, UPVC window to side elevation, curtain rail, UPVC French doors to garden patio, curtain rail.

Kitchen 10' 2" x 19' 8" (3.1m x 6.0m)

Vinyl flooring throughout, skirting, oak floor & wall mounted kitchen cabinets with granite worktops, glass fronted display cabinets, integrated BOSCH oven & grill, BOSCH 4 ring electric hob, BOSCH extractor fan, basin with left-hand drainer & stainless steel tap, space for fridge, space for fridge-freezer, 2 x UPVC windows to rear elevation, integrated blinds, UPVC door to garden, spotlights, multiple plug points.

Landing

Fully carpeted throughout, skirting, dado-rail, coving, pendant light to ceiling, loft hatch. Loft is partially insulated & fully boarded.

Master Bedroom 11' 10" x 18' 4" (3.6m x 5.6m)

Fully carpeted throughout, skirting, coving, pendant lights to ceiling, radiator, multiple plug points, 2 x UPVC windows, curtain rail, TV aerial point, walk-in wardrobe (2.2m x 2.2m).

En-Suite 10' 6" x 14' 9" (3.2m x 4.5m)

Vinyl flooring throughout, skirting, spotlights to ceiling, radiator, chrome towel rail, power shower in glass enclosure, inbuilt vanity unit with white porcelain basin, low level W/C, mirrored wall unit, electric shaver point, UPVC window with frosted glass.

Bedroom 2 11' 10" x 12' 6" (3.6m x 3.8m)

Oak effect flooring throughout, skirting, coving, pendant light, radiator, integrated beech effect wardrobes, UPVC window, curtain rail, pendant lights, multiple plug points throughout.

Bedroom 3 12' 2" x 9' 10" (3.7m x 3.0m)

Beech effect laminate flooring, skirting, coving, pendant light, integrated wardrobes, multiple plug points, radiator, UPVC window to rear elevation, integrated blind, TV aerial point.

Bedroom 4 9' 10" x 7' 7" (3.0m x 2.3m)

Oak effect laminate flooring, skirting, radiator, UPVC window, curtain rail, integrated storage unit.

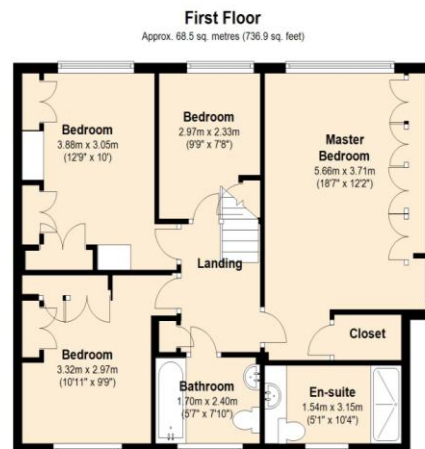
Garage/Side Annex 17' 1" x 10' 6" (5.2m x 3.2m)

Excellent for storage, electric garage up and over door, eaves storage, multiple power points.

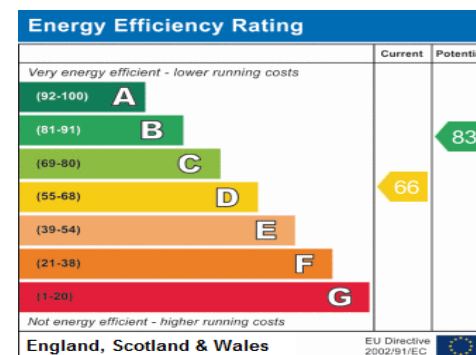
Garden 80' 0" x 35' 0" (24.37m x 10.66m)

Mainly laid to lawn, storage area to side elevation, ornate patio feature, a selection of mature trees, shrubs & flowers.





Total area: approx. 160.0 sq. metres (1722.3 sq. feet)



Bexley / Bexleyheath Department
8 Bexley High Street
Bexley
DA5 1AD
T: 01322 524425
E: info@harpersandco.com

Associate Park Lane
121 Park Lane
Mayfair
W1K 7AG
T: 0207 409 4693
E: info@harpersandco.com

harpersandco.com

Harpers & Co